

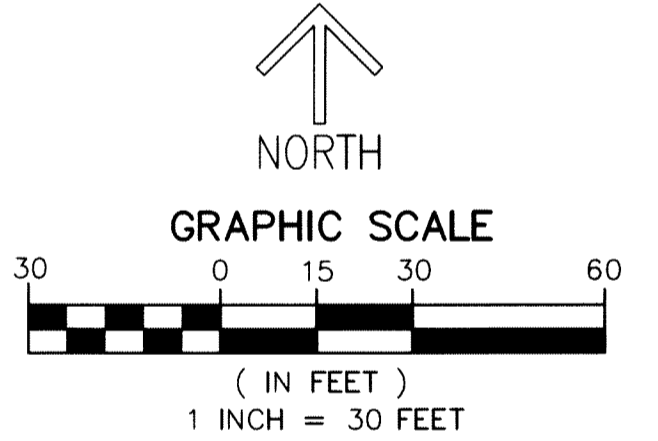
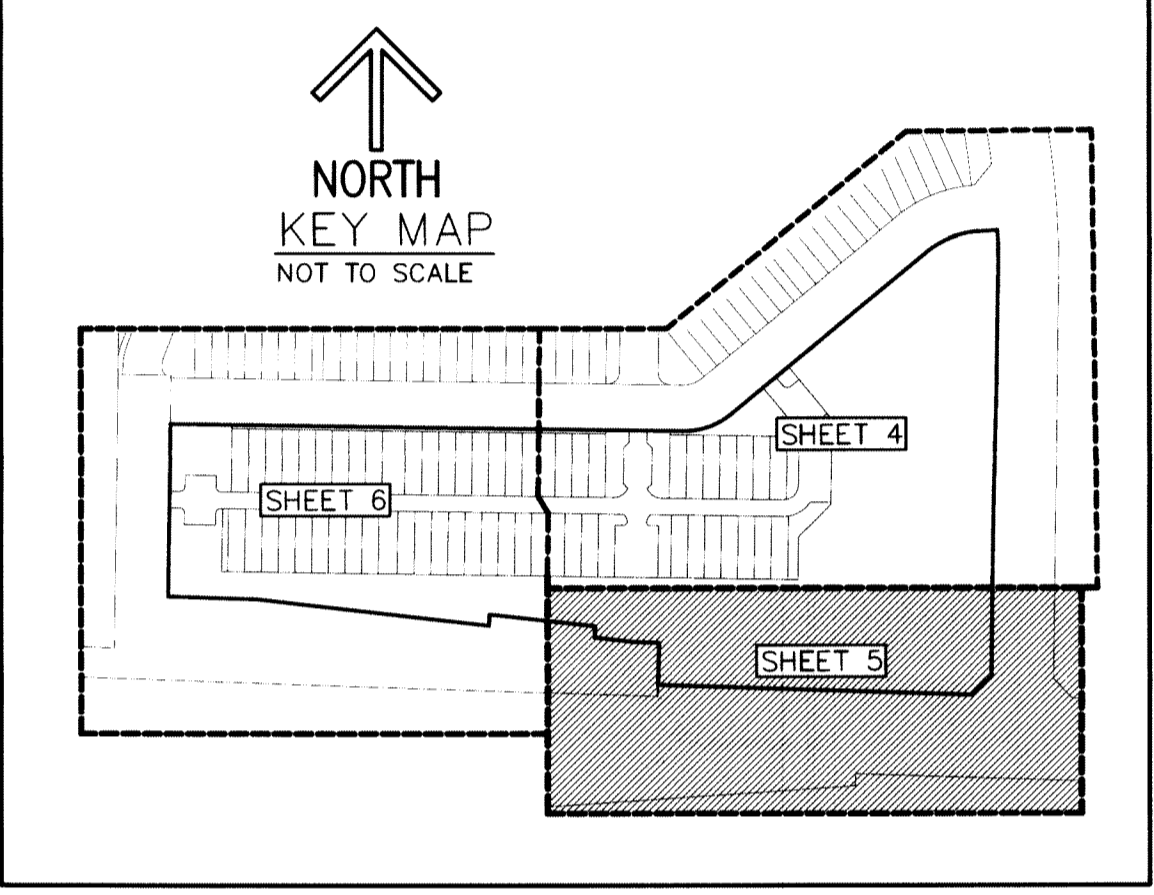
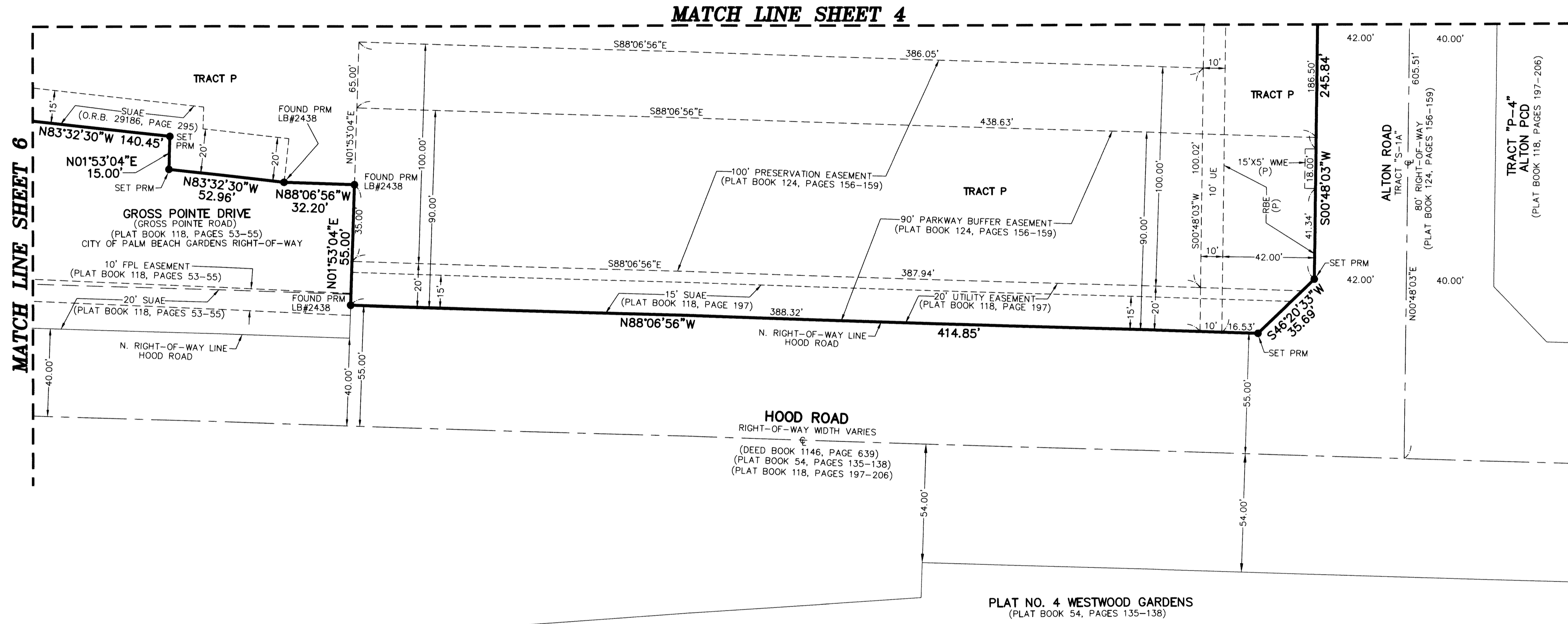
THIS INSTRUMENT PREPARED BY
 DAVID P. LINDLEY
 OF
CAULFIELD and WHEELER, INC.
 SURVEYORS - ENGINEERS - PLANNERS
 7900 GLADES ROAD, SUITE 100
 BOCA RATON, FLORIDA 33434 - (561)392-1991
 CERTIFICATE OF AUTHORIZATION NO. LB3591
 JANUARY - 2019

ALTON NEIGHBORHOOD 4 PHASE 2

BEING A REPLAT OF TRACT "CP", ALTON PCD-TRACTS DEF, AS RECORDED IN PLAT BOOK 124, PAGES 156 THROUGH 159
 OF THE PUBLIC RECORDS OF PALM BEACH COUNTY, FLORIDA, LYING IN SECTION 35, TOWNSHIP 41 SOUTH, RANGE 42 EAST,
 CITY OF PALM BEACH GARDENS, PALM BEACH COUNTY, FLORIDA

64

SHEET 5 OF 6



- LEGEND / ABBREVIATIONS**
- ⊕ - CENTERLINE
 - Δ - DELTA (CENTRAL ANGLE)
 - CB - CHORD BEARING
 - CD - CHORD DISTANCE
 - CJ - COMMUNITY USE
 - L - ARC LENGTH
 - LB - LICENSED BUSINESS
 - LBWE - LANDSCAPE BUFFER WALL EASEMENT
 - O.R.B. - OFFICIAL RECORD BOOK
 - R - RADIUS
 - RBE - ROADWAY BUFFER EASEMENT
 - SUAE - SEACOAST UTILITY AUTHORITY EASEMENT
 - UE - UTILITY EASEMENT
 - WME - WATER MANAGEMENT EASEMENT
 - PRM - DENOTES PERMANENT REFERENCE MONUMENT
 - FND PRM - DENOTES PERMANENT REFERENCE MONUMENT FOUND 4"x4" CONCRETE MONUMENT WITH DISK
 - STAMPED "SCHORAH AND ASSOCIATES PRM LB#2438" - DENOTES PERMANENT REFERENCE MONUMENT FOUND 1/2" IRON ROD WITH ALUMINUM DISK
 - SET PRM - DENOTES PERMANENT REFERENCE MONUMENT SET 5/8" IRON ROD WITH PLASTIC CAP STAMPED "C&W PRM LB#3591"
 - (P) - DENOTES ALTON PCD-TRACTS DEF, AS RECORDED IN PLAT BOOK 124, PAGES 156 THROUGH 159